



Reveal[®] for Multi-Treenut

Rapid multiple allergen detection

Simple food allergen control

We are proud to introduce Reveal[®] for Multi-Treenut, a unique and innovative lateral flow test for rapid allergen detection of six tree nuts with one test. Reveal for Multi-Treenut is designed to screen environmental swabs, rinse waters and validated food products for the presence of any one or a combination of almond, hazelnut, pecan, walnut, cashew and pistachio.

Our test detects allergen levels at low parts per million (ppm) and is perfect for on-site use with results in only ten minutes.



- ✓ Almond
- ✓ Walnut
- ✓ Pistachio
- ✓ Hazelnut
- ✓ Cashew
- ✓ Pecan



A new way to test

- Multiple detection in one test → Cost and time effective
- Only test of its kind on the market → Unique
- Easy to use → No training required
- Rapid screening → Real time decisions



For more information or to place an order please contact:

Neogen Europe Ltd. The Dairy School • Auchincruive, Ayr, KA6 5HU • Scotland • UK
Tel: 01292 525 626 • Fax: 01292 525 602 • www.neogeneurope.com • allergens_uk@neogeneurope.com

Reveal for Multi-Treenut Procedure

Note: Please read kit instructions completely before performing test.

Rinse Sampling



1. Open Type 11 extraction buffer sachet and add to a sample tube.



2. Add 1 mL of sample to the sample tube.



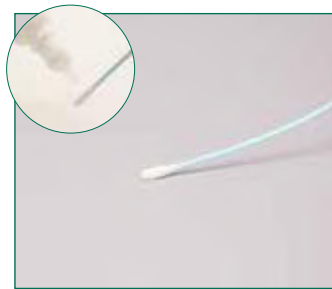
3. Secure cap and shake for 1 minute.

*Please contact us for details on our validation service for food product samples.

Swab Sampling



1. Open Type 11 extraction buffer sachet and add to a sample tube.



2. Gather the sample. *For dry surfaces moisten with swab wetting solution. Do not premoisten for wet surfaces.*



3. Return the swab to the extraction buffer and break off into the tube.



4. Secure cap and shake for 1 minute.

Sample Testing



1. Remove the lid and fill with liquid from the tube.



2. Dip the Reveal device into the liquid in the lid; ensure that the cavity is saturated with the liquid.



3. Leave the cavity saturated until the liquid is seen running into the test window.



4. Place the device on a flat surface and allow the test to develop for 10 minutes.



5. Interpret the results.

Verify your results

In addition to on-site testing why not verify with our external laboratory services? Samples can be sent to our laboratory which offers a range of UKAS accredited allergen testing with various turnaround times from same day express to three, five or ten day analysis.



For more information or to place an order please contact:

Neogen Europe Ltd. The Dairy School • Auchincruive, Ayr, KA6 5HU • Scotland • UK
Tel: 01292 525 626 • Fax: 01292 525 602 • www.neogeneurope.com • allergens_uk@neogeneurope.com